

Deffenbaugh Recycling Co. LLC

2404 S. 88th Street
Kansas City, KS 66111
Michael Clagett

Deffenbaugh

RECYCLING COMPANY, LLC

913-441-9660

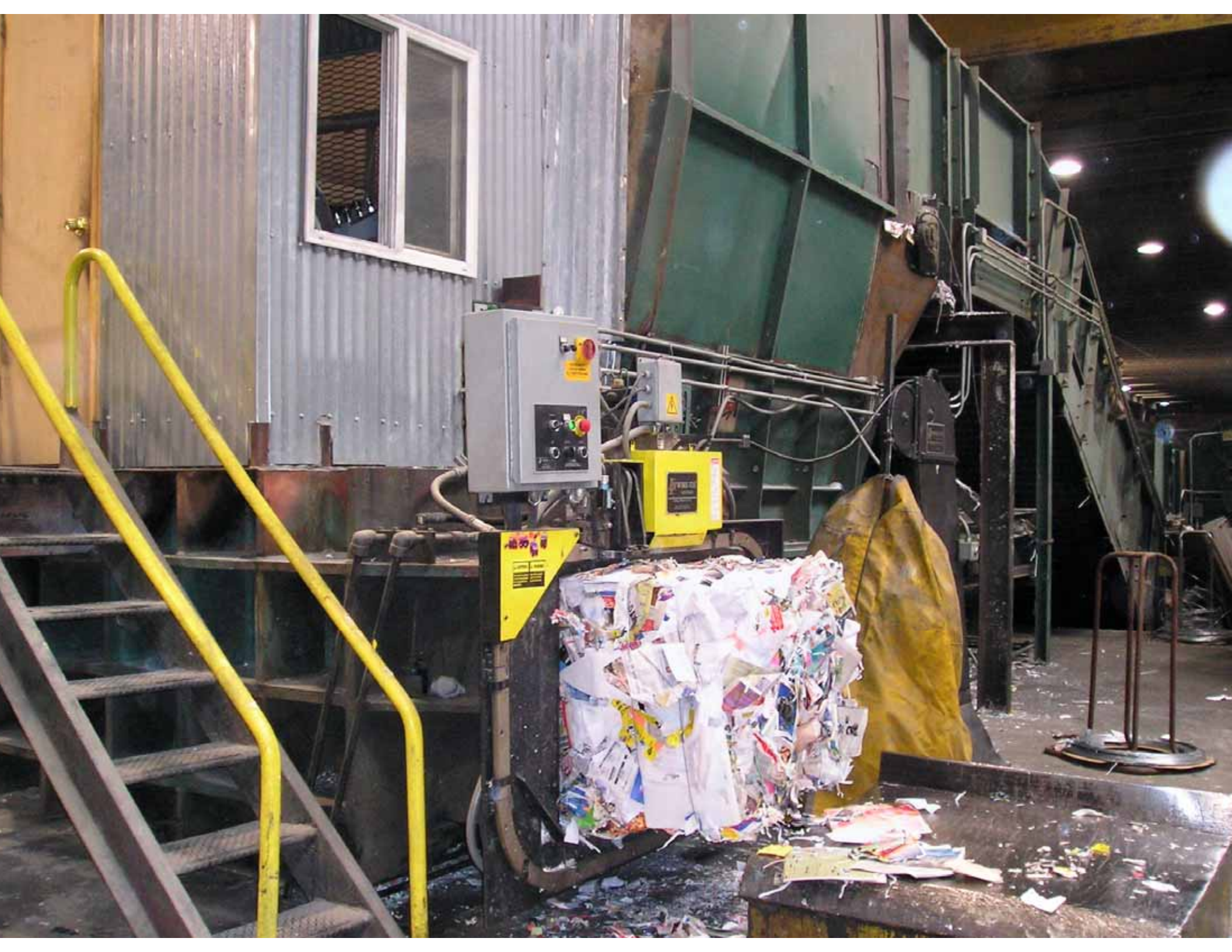


Began Recycling Operations in Late 1989

- **Early focus on residential curbside**
- **Programs established in Johnson County**
- **Approximately 3,600 tons during first year**
- **Expansion of Curbside Programs**
- **Big City – Small City Dynamics**

Deffenbaugh Materials Recovery Facility

- **Approximately 75,000 sq. ft. building**
- **Approximately 25 acres**
- **2 Harris HRB-10 Balers**
- **1 Harris HRB-918 Baler**
- **Mayfran International Conveyor Systems**
- **Bollegraaf Sorting System**
- **TI Tech Near Infrared Optical Sorting**
- **Overhead Magnet**
- **Eddy Current**









Shipping Options

- **Tractor Trailer**
- **Overseas Shipping Containers**
- **Rail Cars**





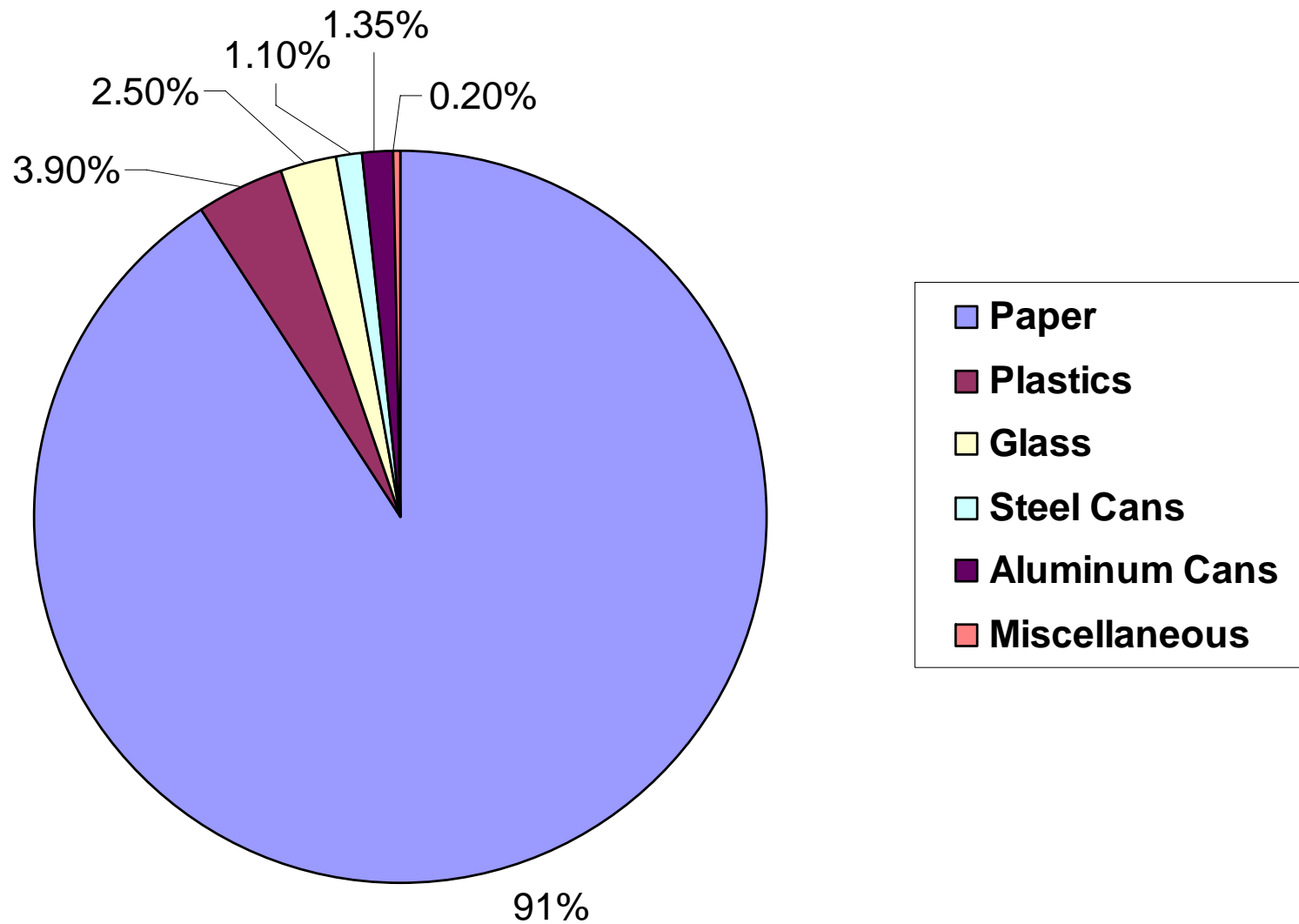
HOMASON
SHOG
707-1114

HOMASON
SHOG, OIL

Materials Marketing

- **Domestic & Export Options**
- **Flexibility**
- **Reliable Buyers**
- **Commodities Game**
- **Market Volatility**

Materials Allocations



Residential Curbside Recycling

- **Original “Curbsort” Method of Collection**
- **Switch to “Single Stream” Collections**



Bollegraaf

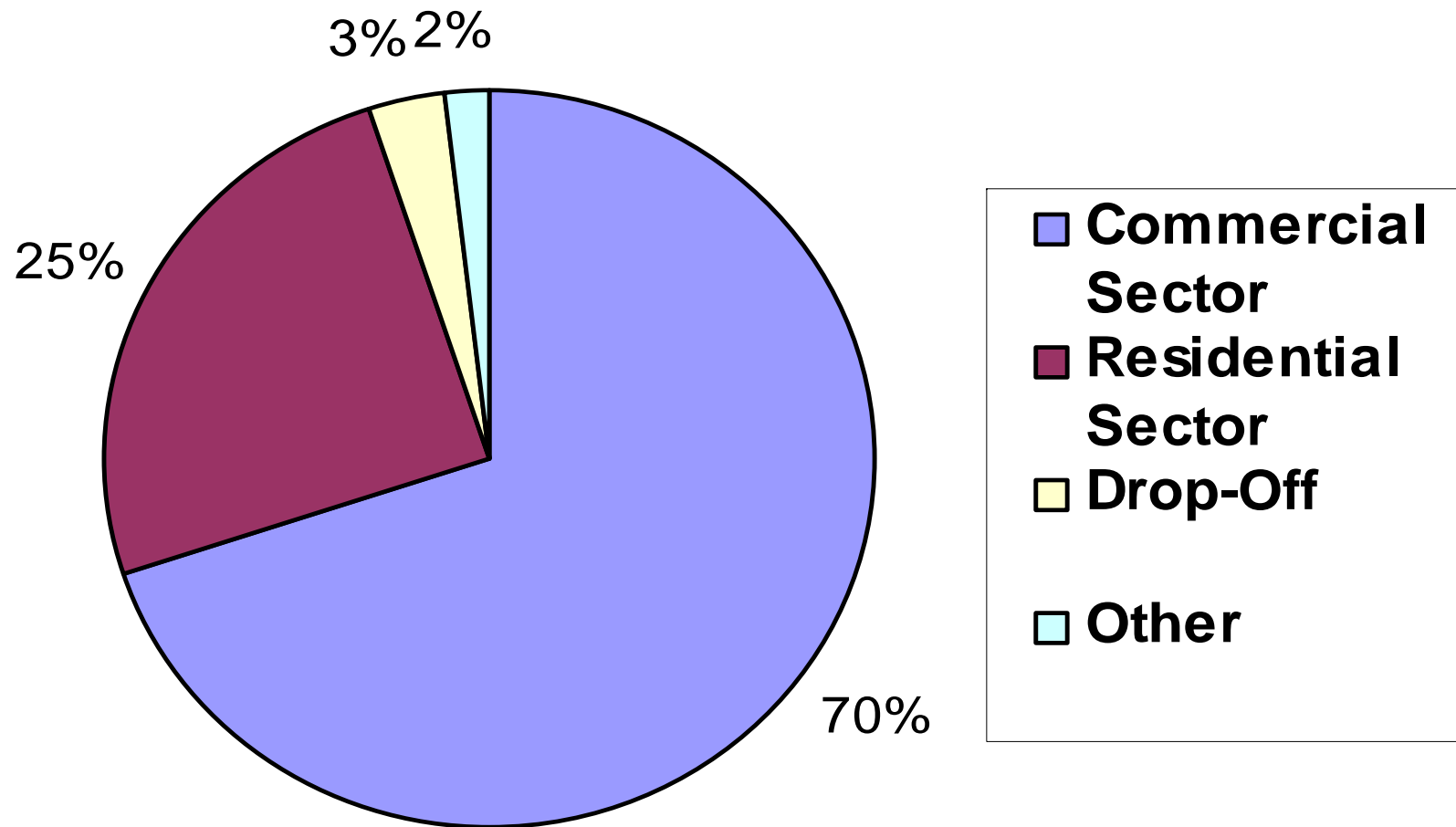


Bollegraaf





Materials Sources



Deffenbaugh Recycling System

- **Source Separated Materials**
- **Materials Processed & Shipped – ASAP**
- **Contracts – Floor Pricing**

