

2007 Mora Conference

Diversion Trends and Opportunities on the Horizon

Phil Askey

Environmental Compliance Manager

Johnson County Environmental Department

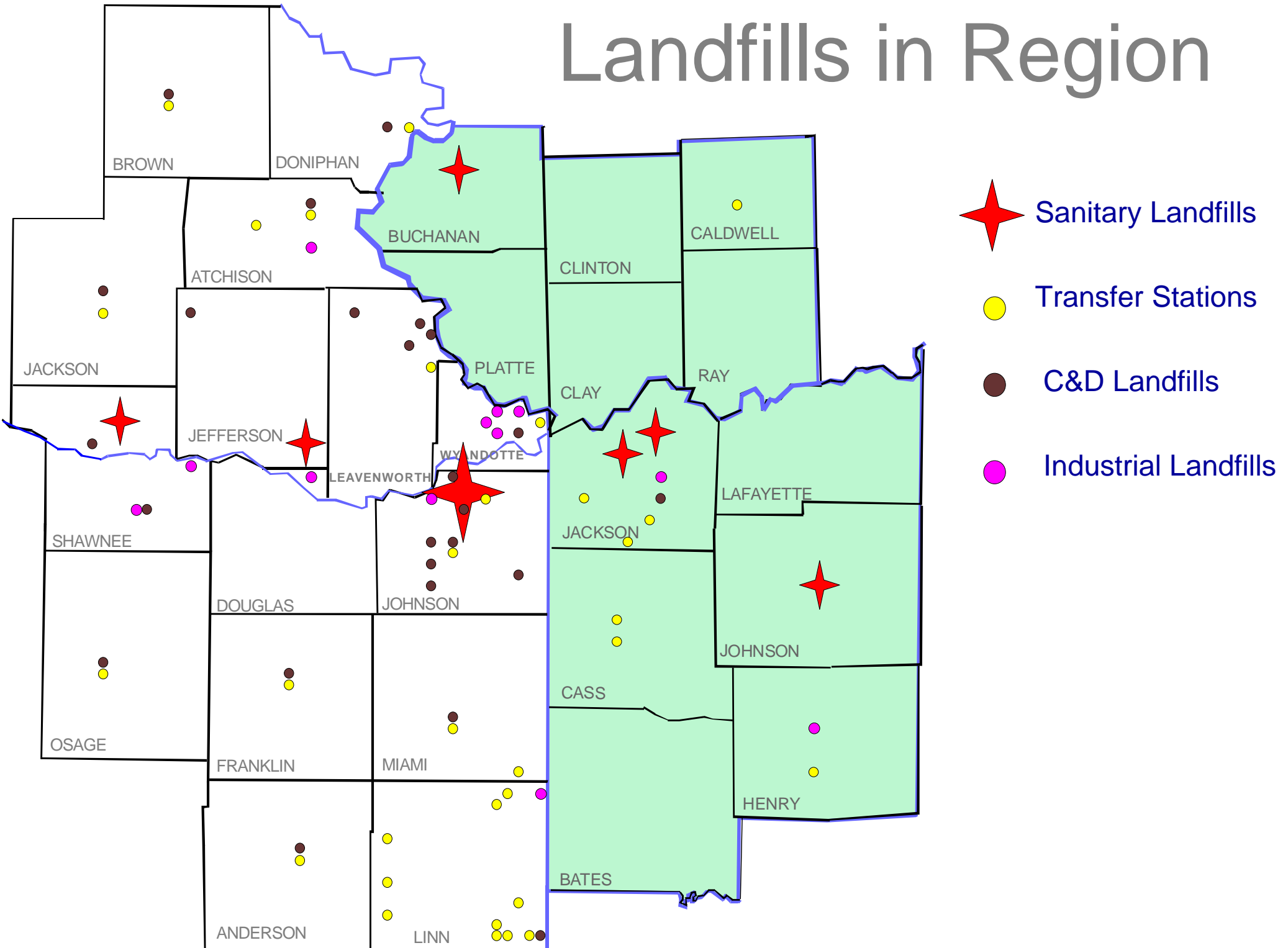
11811 S. Sunset Drive, Olathe, KS

Johnson County, Kansas Waste Sort and Generation Study

- Johnson County Landfill (Deffenbaugh)
- Olathe Transfer Station - Hamm Landfill
- APAC-Reno Construction/Demolition LF

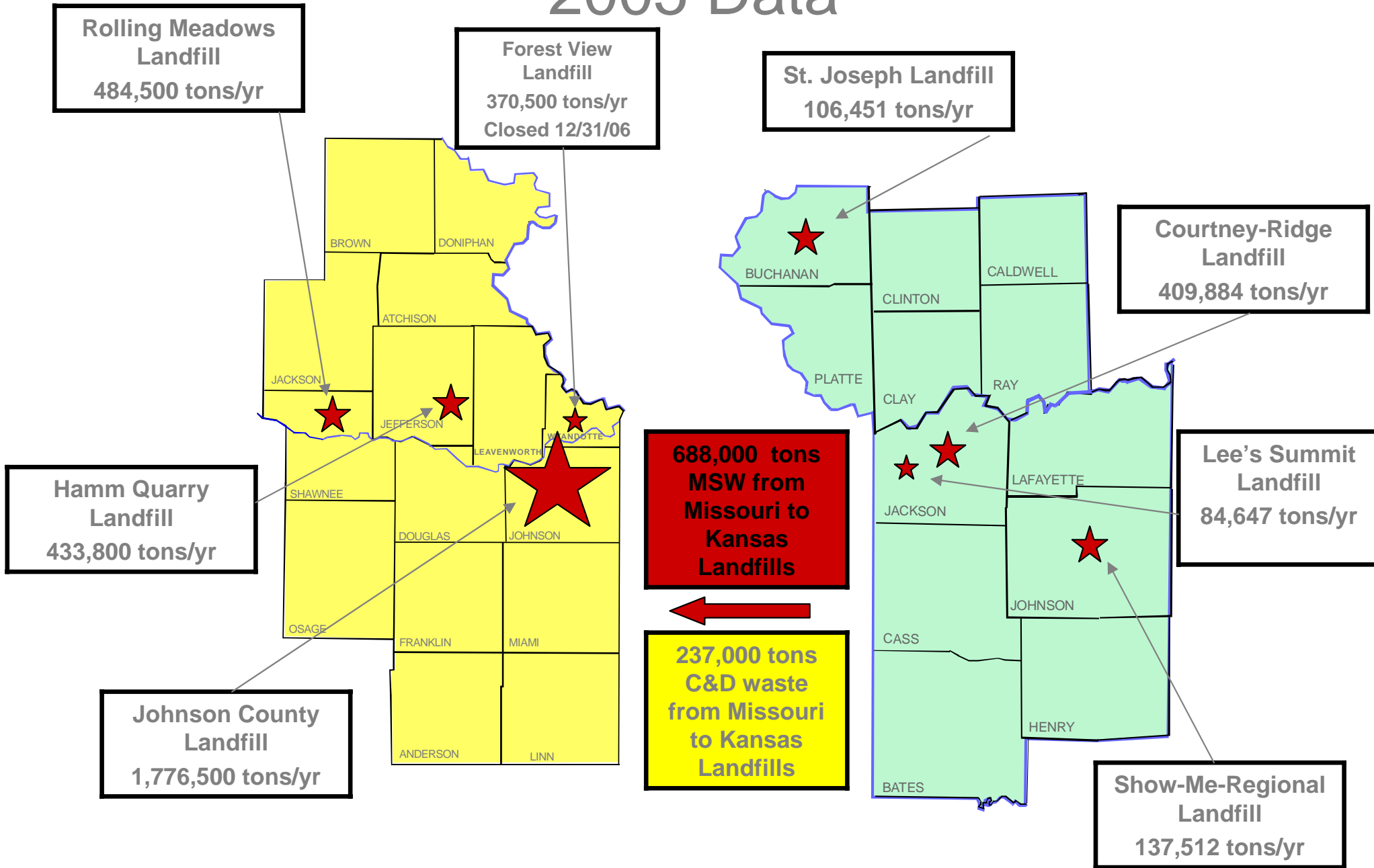
Two waste sort series conducted October 2006 and March-April 2007

Landfills in Region



Sanitary Landfills in Region

2005 Data



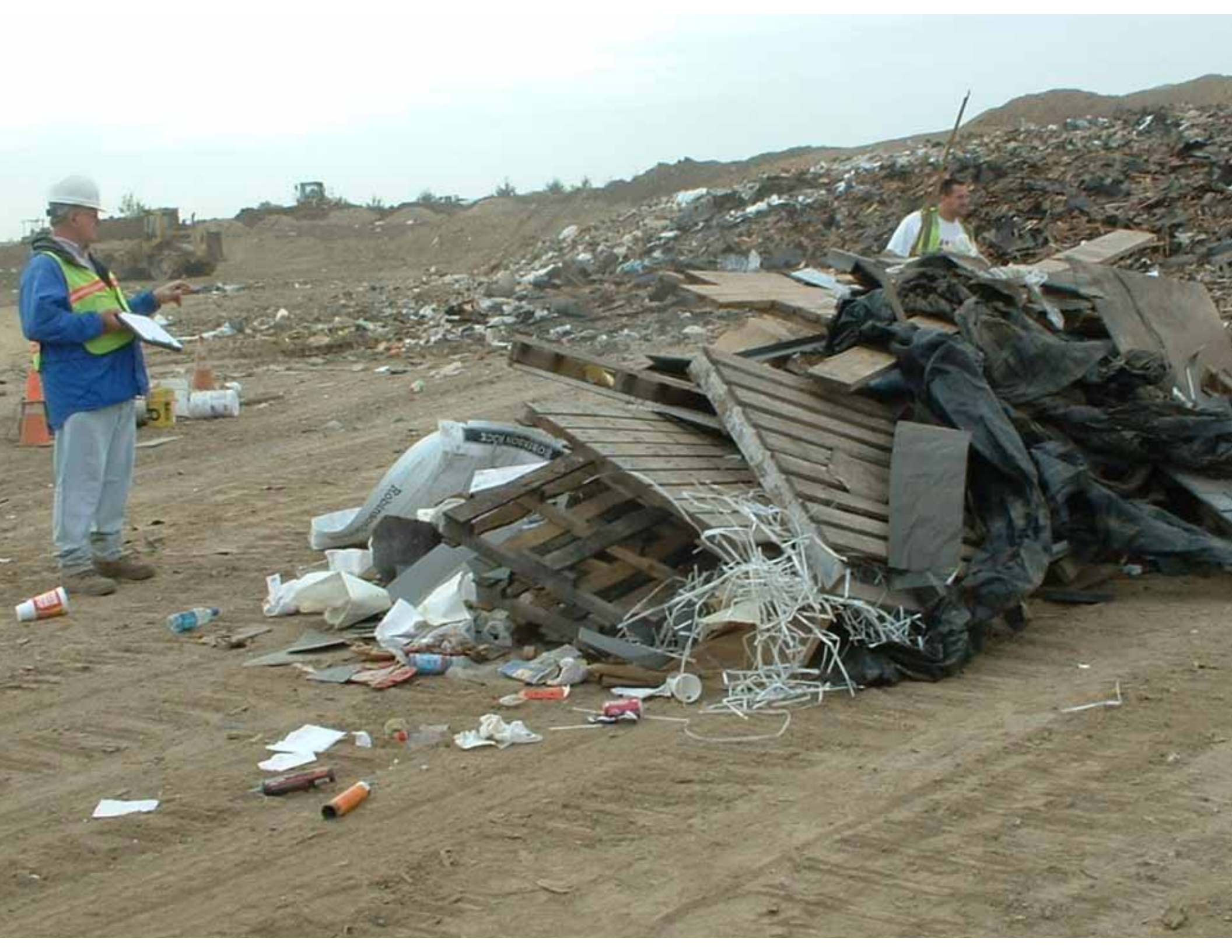
**APAC-Reno C/D Landfill
waste sort – Oct 2006**





WM

PAOLA, KS
GVW 85,500
USDOT 376492

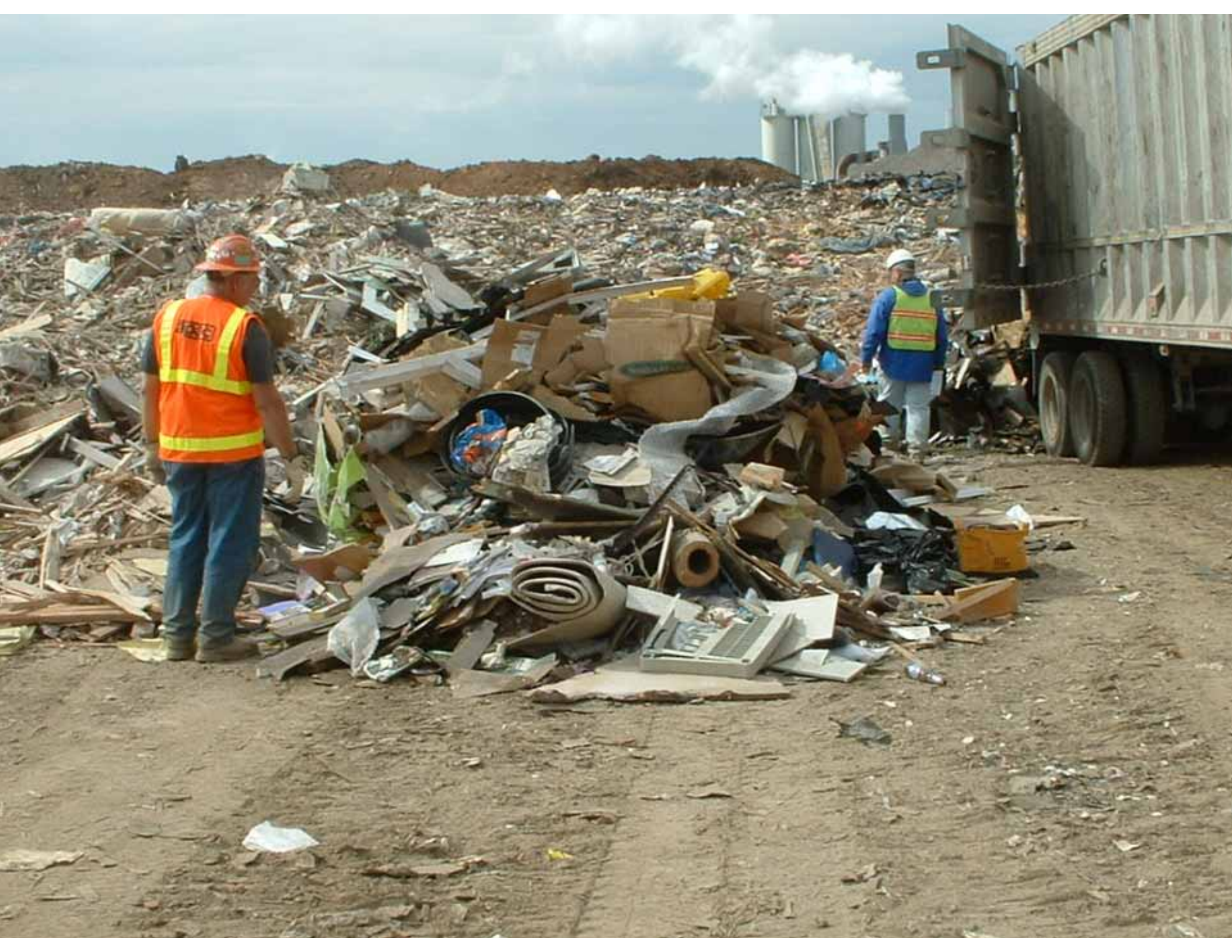












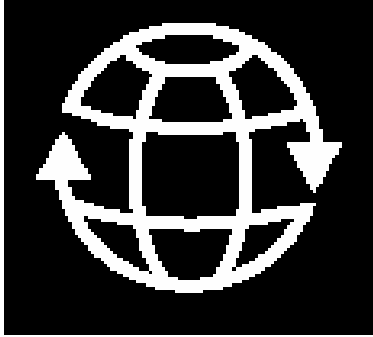




APAC Waste Sort 2007

Item	Percentage of Sampled Loads that Contained the Item
Scrap Lumber	95
Furniture	62
Drywall	57
Cardboard	52
Yard Waste/Limbs	52
Plastic/Plastic Pipe	48
Carpet	43
Metals	38
Electric/Telephone Cable	38
Wood Pallets	33
Dirt	33
Concrete	29
Shingles	29
Insulation	29
Plumbing Fixtures	24
Metal Straps	24
MSW	24
Siding	19
Landscape Timbers	19
Appliances	19

C&D Recycling Case Study Kansas Landfill Association



C&D Recyclers of Kansas, Inc.

4250 W 37th St North, Wichita, KS 67204
(316) 942-8666

Recycling – Getting Started

- Conduct a waste survey
 - Types and volume of recyclables
- Develop relationships
 - Recycled commodity brokers and customers
- Training
 - Employees and customers
- Start sorting

Materials We Recycle

- Concrete, Brick, Cinder Blocks
 - Road base
- Asphalt
 - New asphalt products



Materials We Recycle

- Wood Products & Green Waste
 - Pallets
 - Shipping crates
 - Stakes
 - Lathe
 - Mulch
 - Lumber



Materials We Recycle

- Drywall
 - Composting operation
- Metal – Appliances, Mobile Home Frames
- Tires
- Wiring – Copper
- Cardboard and Packaging



Happily Sorting Away

